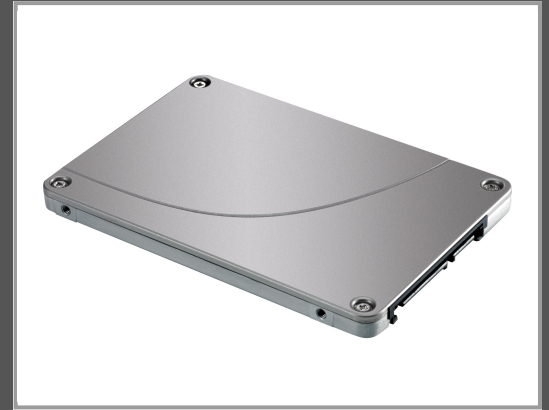


# HP 256 GB SSD - intern - 2.5" SFF (6.4 cm SFF) - SATA 6Gb/s - Self-Encrypting Drive (SED)

TCG Opal Encryption 2.0 - für Workstation Z1 G3 - Z2 G4 - Z2 G5 - Z4 G4 - Z640 (2.5" SFF) - Z8 G4; ZCentral 4R



Gruppe	Festplatten
Hersteller	HP
Hersteller Art. Nr.	G7U67AA
EAN/UPC	0888793407547

## Beschreibung

HP - 256 GB SSD - intern - 2.5" SFF (6.4 cm SFF) - SATA 6Gb/s - Self-Encrypting Drive (SED), TCG Opal Encryption 2.0 - für Workstation Z1 G3, Z2 G4, Z2 G5, Z4 G4, Z640 (2.5" SFF), Z8 G4; ZCentral 4R

## Hauptmerkmale

Produktbeschreibung	HP - Solid-State-Disk - 256 GB - SATA 6Gb/s
Typ	Solid-State-Disk - intern
Kapazität	256 GB
Hardwareverschlüsselung	Ja
NAND-Flash-Speichertyp	Multi-Level-Cell (MLC)
Formfaktor	2.5" SFF (6.4 cm SFF)
Schnittstelle	SATA 6Gb/s
Merkmale	256-Bit-AES
Entwickelt für	Workstation Z1 G3, Z2 G4, Z2 G5, Z4 G4, Z640 (2.5" SFF), Z8 G4; ZCentral 4R

Technische Daten © 1WorldSync. Technische Änderungen und Irrtümer vorbehalten.