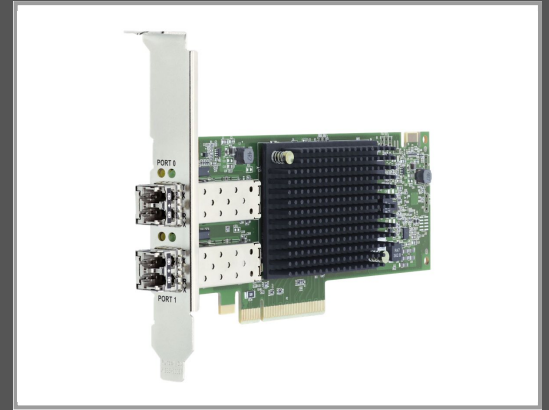


# Lenovo Emulex LPe35002 32Gb 2-port PCIe Fibre Channel Adapter - Hostbus-Adapter - PCIe 4.0 x8 Low-Profile - 32Gb Fibre Channel Gen 7 (Short Wave)

x 2 - für ThinkSystem SR630; SR635; SR645; SR650; SR655; SR665; SR850; SR850 V2; SR860; SR950



Gruppe	Netzwerkadapter / Schnittstellen
Hersteller	Lenovo
Hersteller Art. Nr.	4XC7A08251
EAN/UPC	0889488496686

## Beschreibung

Emulex LPe35002 32Gb 2-port PCIe Fibre Channel Adapter - Hostbus-Adapter - PCIe 4.0 x8 Low-Profile - 32Gb Fibre Channel Gen 7 (Short Wave) x 2 - für ThinkSystem SR630; SR635; SR645; SR650; SR655; SR665; SR850; SR850 V2; SR860; SR950

## Hauptmerkmale

Produktbeschreibung	Emulex LPe35002 32Gb 2-port PCIe Fibre Channel Adapter - Hostbus-Adapter - PCIe 4.0 x8 - 32Gb Fibre Channel Gen 7 (Short Wave) x 2
Gerätetyp	Hostbus-Adapter
Formfaktor	Plug-in-Karte - Low-Profile
Schnittstellentyp (Bustyp)	PCI Express 4.0 x8
PCI-Spezifikationsrevision	PCIe 4.0
Ports	32Gb Fibre Channel Gen 7 (Short Wave) x 2
Abmessungen (Breite x Tiefe x Höhe)	16.8 cm x 6.9 cm
Verdrahtungstyp	Fibre Channel
Data Link Protocol	32Gb Fibre Channel Gen 7 (SW)
Datenübertragungsrate	28.05 Gbps
Entwickelt für	ThinkSystem SR630 7X01, 7X02; SR635 7Y98, 7Y99; SR645 7D2X; SR650 7X05, 7X06; SR655 7Y00, 7Z01; SR665 7D2W; SR850 7X18, 7X19; SR850 V2 7D32; SR860 7X69, 7X70; SR950 7X11, 7X12, 7X13

Technische Daten © 1WorldSync. Technische Änderungen und Irrtümer vorbehalten.