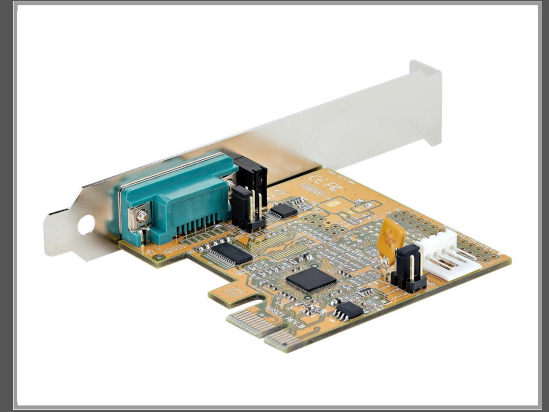


# StarTech.com PCI Express Serial Card, PCIe to RS232 (DB9)

Serial Interface Card - PC Serial Card with 16C1050 UART - Standard or Low Profile Brackets - COM Retention - For Windows & Linux - PCIe to DB9 Card (11050-PC-SERIAL-CARD) - Serieller Adapter - PCIe 2.0 Low-Profile - RS-232 x 1 - Gelb



Gruppe	Controller
Hersteller	StarTech.com
Hersteller Art. Nr.	11050-PC-SERIAL-CARD
EAN/UPC	0065030894777

## Beschreibung

StarTech.com PCI Express Serial Card, PCIe to RS232 (DB9) Serial Interface Card, PC Serial Card with 16C1050 UART, Standard or Low Profile Brackets, COM Retention, For Windows & Linux - PCIe to DB9 Card (11050-PC-SERIAL-CARD) - Serieller Adapter - PCIe 2.0 Low-Profile - RS-232 x 1 - Gelb

## Hauptmerkmale

Produktbeschreibung	StarTech.com PCI Express Serial Card, PCIe to RS232 (DB9) Serial Interface Card, PC Serial Card with 16C1050 UART, Standard or Low Profile Brackets, COM Retention, For Windows & Linux - PCIe to DB9 Card (11050-PC-SERIAL-CARD) - Serieller Adapter - PCIe 2.0 - RS-232 x 1
Gerätetyp	Serieller Adapter
Formfaktor	Plug-in-Karte - Low-Profile
Schnittstellentyp (Bustyp)	PCI Express 2.0 x1
PCI-Spezifikationsrevision	PCIe 2.0
Ports	RS-232 x 1
Abmessungen (Breite x Tiefe x Höhe)	1.8 cm x 6.5 cm x 6.7 cm
Data Link Protocol	RS-232
Datenübertragungsrate	921.6 Kbps
Produktzertifizierungen	16C1050 UART
Farbe	Gelb
Systemanforderungen	Linux, Microsoft Windows Server 2016, Microsoft Windows Server 2019, Microsoft Windows 7 / 8 / 10 / 11

Technische Daten © 1WorldSync. Technische Änderungen und Irrtümer vorbehalten.